



RECP #: 752681

RECORDED 5/8/2019 AT 1:11 PM BK# 2620 PG# 1723  
Debra K. Lee, CLERK OF LARAMIE COUNTY, WY PAGE 1 OF 1

# STATE OF WYOMING CORNER RECORD

(In compliance with the CORNER PERPETUATION AND FILING ACT, Wyoming Statutes, 1997 Section 33-29-140, et. seq., and the Rules and Regulations of the Board of Registrations for Professional Engineers and Professional Land Surveyors)

## NORTH QUARTER CORNER SECTION 4, T. 18 N., R. 61 W., 6TH P.M., LARAMIE COUNTY, WYOMING

**GLO:** SET A GRANITE STONE 16X8X4, 11 IN DEEP MARKED  $\frac{1}{4}$  ON NORTH FACE FOR  $\frac{1}{4}$  SEC. COR.

**FOUND:** NOTHING

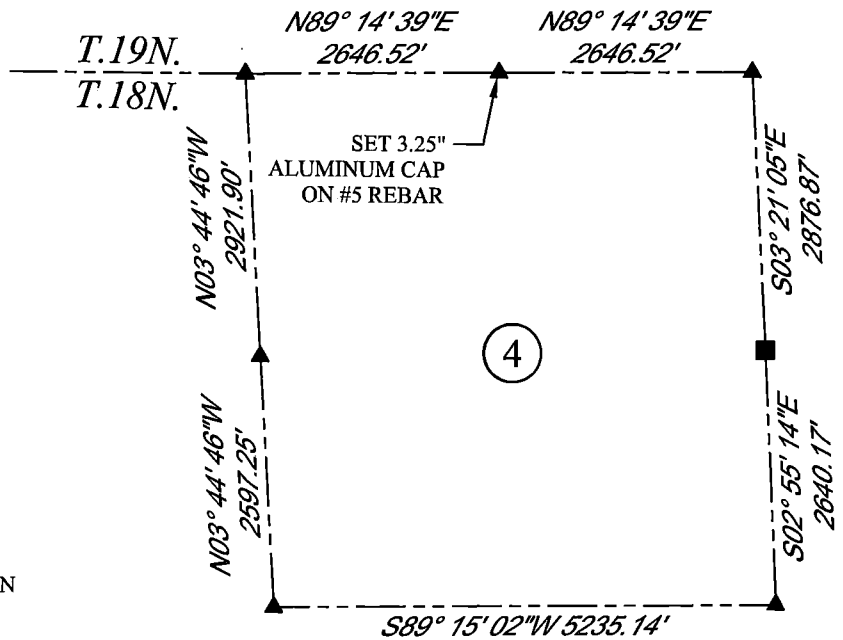
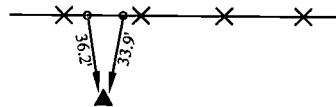
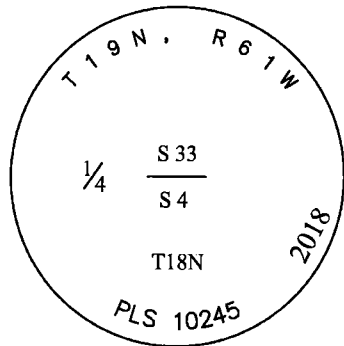
**SET:** SET A 3.25" ALUMINUM CAP ON #5 REBAR, AT SURFACE MARKED AS SHOWN. SET (2) MAG NAILS IN FENCE POSTS AS SHOWN. POSITION RE-ESTABLISHED BY SINGLE PROPORTION.



SCALE: NONE

NORTH DETERMINED BY  
G.P.S OBSERVATIONS

SET 3.25" ALUMINUM CAP, STAMPED AS SHOWN



### LEGEND:

- FOUND BLM CAP
- FOUND USFS CAP
- FOUND STONE
- FOUND PRIVATE MONUMENT
- ◆ CALCULATED POSITION
- ▲ SET MONUMENT (LS10245)
- SECTION LINE

DATE OF FIELD WORK: 09/20/2018 OFFICE REFERENCE: MERIDEN

### CROSS INDEX DIAGRAM

	1	2	3	4	5	6	7	8	9	10	11	12	13	14	15	16	17	18	19	20	21	22	23	24	25	
A																										
B																										
C		6																								
D			5																							
E				4																						
F					3																					
G			7																							
H				8																						
J					9																					
K						10																				
L		18																								
M			17																							
N				16																						
O					15																					
P		19																								
Q			20																							
R				21																						
S					22																					
T		30																								
U			29																							
V				28																						
W					27																					
X		31																								
Y			32																							
Z				33																						
	1	2	3	4	5	6	7	8	9	10	11	12	13	14	15	16	17	18	19	20	21	22	23	24	25	

WOOD  
2615 AVIATION DRIVE  
SHERIDAN, WY 82801  
PH: 307-675-6400



THIS CORNER RECORD WAS  
PREPARED BY ME OR UNDER  
MY DIRECTION AND  
SUPERVISION,  
SEAL AND SIGNATURE

